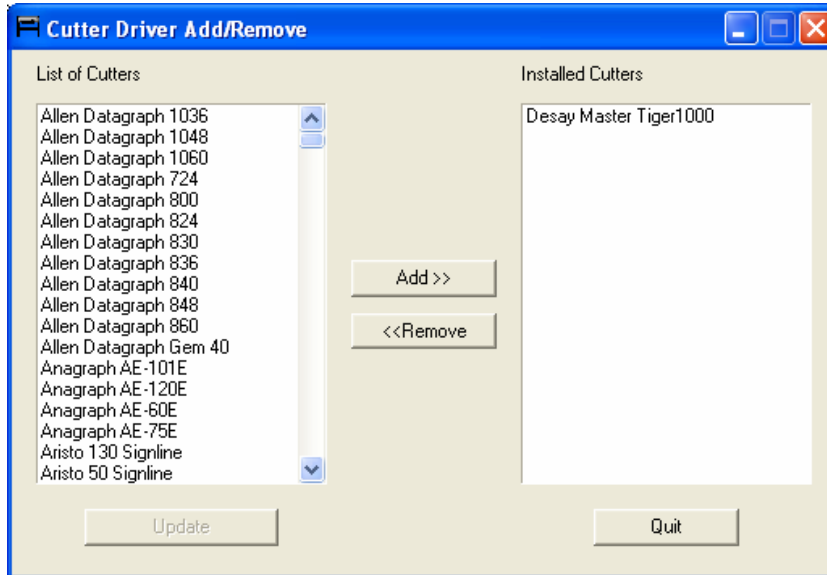


How to add DESAY Master Driver in SignGO Pro /SignGO Lite

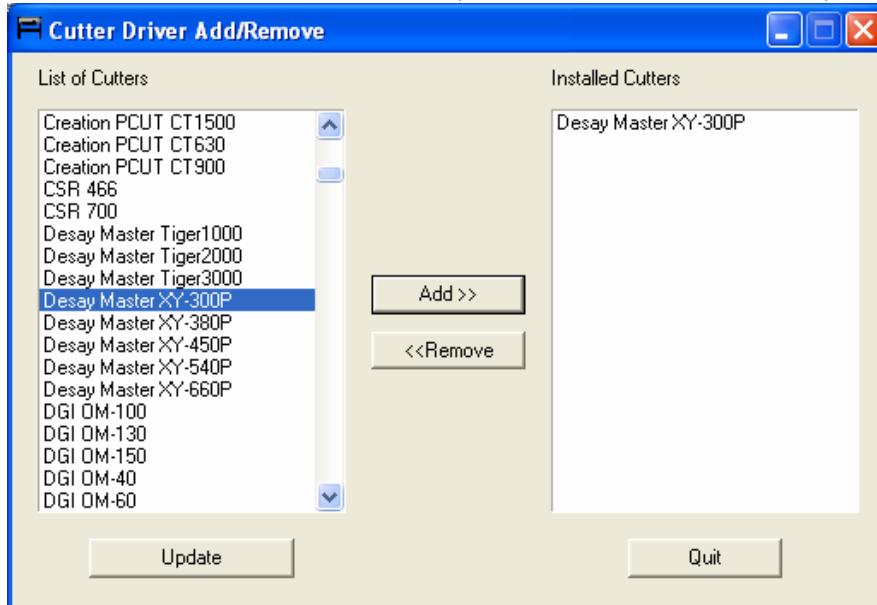
XP system.

1. Go to your PC's 'start', then 'all program', and then looking for program group. 'SignGO FD' or 'SignGO Lite FD'.
2. Click on 'add and remove plotter', you will got the following windows.



In above windows, no matter what you have on right side 'Installed Cutters' listing, use your mouse highlight it, and then click on **'Remove'** button, and remove it from your right side listing. Then, click on **'Update'** button on the bottom on this page, and make sure nothing on right side. (Please don't forget **click "Update" button**, otherwise you action will not be update)

Now, scroll down the manufacture model on the left side, and choose the model for our master cutter, in this example, we choose **'DESAY Master XY-300P'**, and then click on **'add'** button, and add it to the right side listing.




Then click on **'Update'** button on the bottom on this page, make sure the right side showing the cutter you chose. Then **click on 'Quit'**

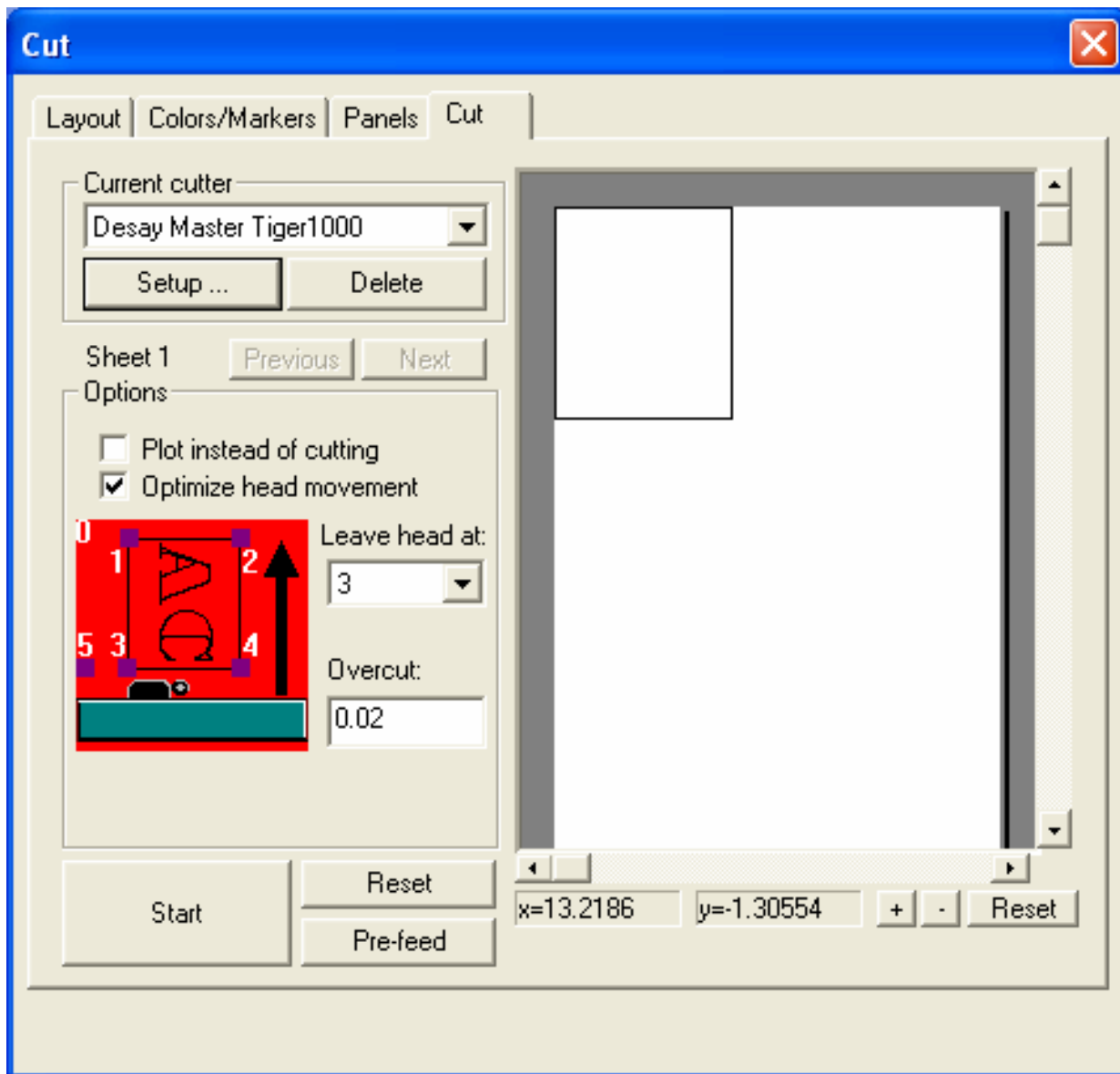
(Please don't forget **click "Update" button**, otherwise you action will not be update)

How to add DESAY Master Driver in SignGO Pro /SignGO Lite

Now back to SignGO software (SIGNGO PRO or SIGNGO Lite)

Run the SignGO software.

1. Type in something in your **signgo** design layout, and then 'cut' . 
2. Once in **cut windows**, click on the 'cut' tab.
Make sure **current cutter** is **desay master model**, then click on '**setup**'.
You can choose it from the pull down menu on this page at 'current cutter' section.
3. You will get 'universal plotter driver options' windows.
In this windows, you got three TABs, make sure each of their setting is the same as our screenshot.



SignGO Cutting control page.

How to add DESAY Master Driver in SignGO Pro /SignGO Lite

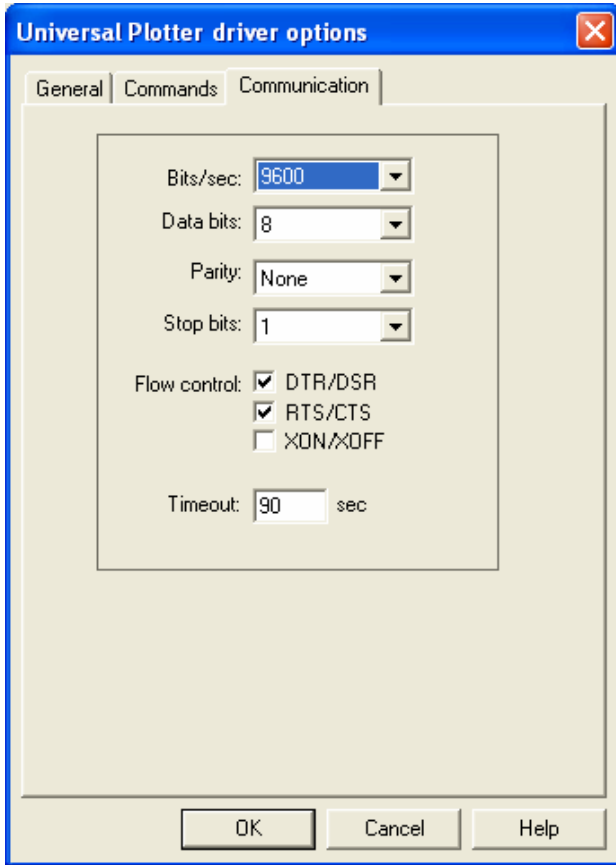
The screenshot shows the 'Universal Plotter driver options' dialog box with the 'General' tab selected. The 'Name' field contains 'Desay Master Tiger1000' and the 'Connect' dropdown is set to 'COM1:'. The 'Max. Sheet size' section includes 'Length: 984.252' and 'Width: 24.7638'. Other settings include 'Page size: 0', 'Step size (mm): 0.0254', 'Number of pens: 1', 'Bezier curve accuracy: 20', and 'Tool offset: 0.012'. At the bottom, 'Plot speed' and 'Cut speed' are both set to '31.496 inch/sec', and the 'Absolute' checkbox is checked. 'OK', 'Cancel', and 'Help' buttons are at the bottom.

You can change the driver name and com port number (com1 to com4) on this TAB

The screenshot shows the 'Universal Plotter driver options' dialog box with the 'Communication' tab selected. It lists various command strings for plotter operations: 'Initialize: :H A L0 ECN U\32', 'Start plot:', 'Start cut:', 'Reset: :H A L0 ECN U @\32', 'Move: U#.#\32', 'Line: D#.#\32', 'Bezier curve:', 'End: U F @\32', 'Set origin: A U0,0\32', 'Set depth:', 'Set speed:', 'Select Pen:', 'Get plotting area:', and 'Get head position:'. A checked checkbox 'Uses multiple points in Line command' is followed by 'Start line: D#.#', 'Continue line: .#.#', and 'End of line: \32'. 'OK', 'Cancel', and 'Help' buttons are at the bottom.

Please make sure all the command the same as shown on this screenshot

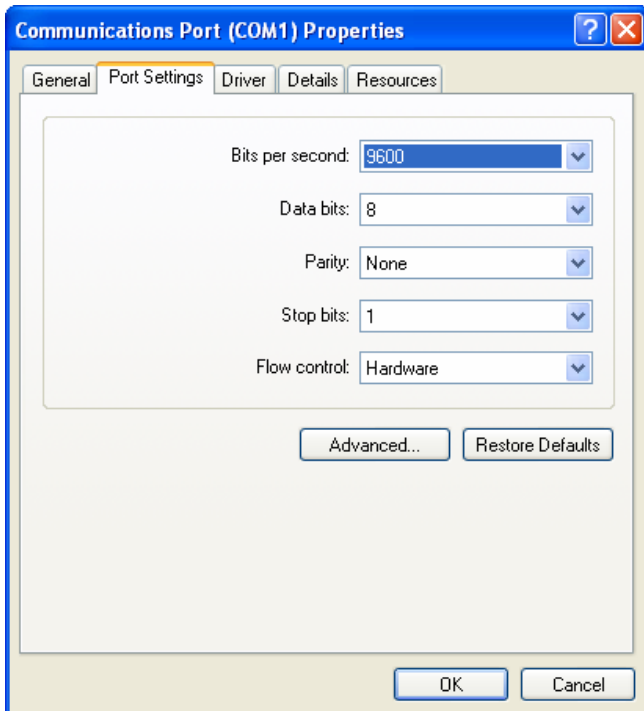
How to add DESAY Master Driver in SignGO Pro /SignGO Lite



Flowcontrol CHECK MARK on
DTR/DSR
RTS/CTS

Pleas make sure NO CHECK MARK on
'XON/XOFF'.

***** PORT SETUP IN YOUR PC SYSTEM *****



Your PC's device manager setup page, please
make sure flow control setting is on 'hardware.'

if you don't know how to get this page, please
visit www.masterwarehouse.com/help.